



YEAR 3

Friday 8th May

Homework Tasks (Year 3):

- **Maths:** Please complete and mark- the 'Compare, add and subtract mass' tasks on the next pages of this document and record your responses in your homework jotter book.

*Please place your homework books in the homework box by **Wednesday 13th May***

- **Spelling:** A spelling test, on **Summer Term 1 -Week 4 blue words** will take place next **Thursday** (see the separate spelling sheet for this term – it is split into weeks and you will be instructed which week we are currently learning).
- **Times Tables:** Please complete - and mark- Summer Term : Workout 4 p56 - 57 of your CGP 10-minute weekly workout book and your weekly test on the **2x , 3x and 8x** table will be next **Friday**.
- **Reading:** Please read for 45mins throughout the week.

Compare Mass

4. Complete the following sentence using words from the word bank below.

The bananas are _____ the carrot but _____ pineapple.



heavier than

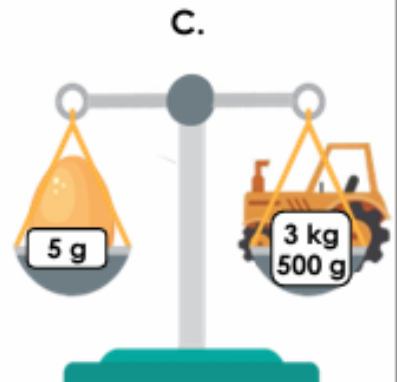
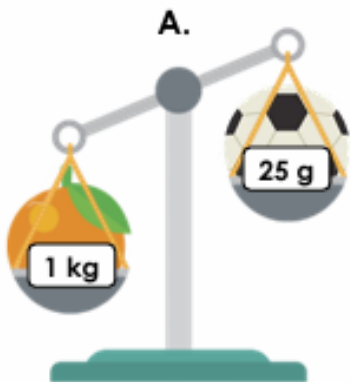
the same as

lighter than



VF
HW/Ext

5. Tick the scale which is correctly positioned.



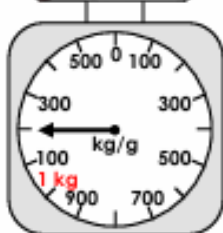
VF
HW/Ext

6. Who is correct? Explain your answer.



Samantha

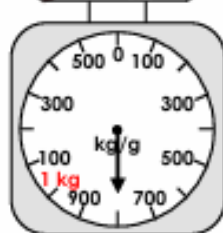
I think the yoyo weighs more than the snow globe.



I think the snow globe weighs more than the yoyo.



Jamie

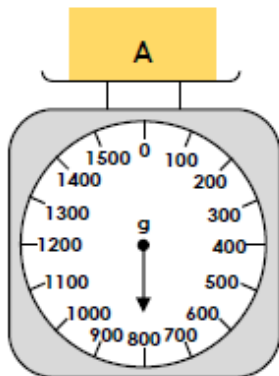


RPS
HW/Ext

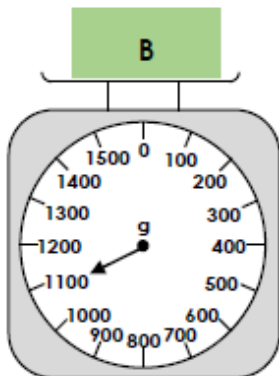
Add and Subtract Mass

4. Solve the calculations and match the answer to the weights shown on the scales.

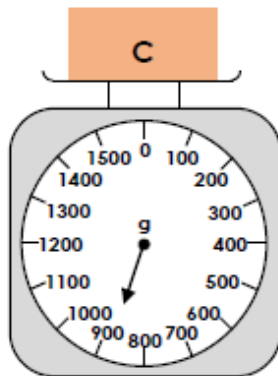
$$1. 870\text{g} + 230\text{g}$$



$$2. 1\text{kg and } 420\text{g} - 520\text{g}$$



$$3. 1\text{kg } 50\text{g} - \frac{1}{4}\text{kg}$$



VF
HW/Ext

5. Complete the calculations below to find the odd one out.

A. $1\text{kg and } 250\text{g} + 450\text{g} + 230\text{g} =$

B. $2\text{kg and } 450\text{g} - 520\text{g} =$

C. $1\frac{1}{4}\text{kg} + 680\text{g} =$

D. $720\text{g} + \frac{1}{2}\text{kg} =$

E. $2\frac{1}{2}\text{kg} - 570\text{g} =$



VF
HW/Ext

Answers

4. The bananas are heavier than the carrot but lighter than the pineapple.
5. A
6. Jamie is correct because the mass of the rocket and snow globe together is heavier than the mass of the rocket and yoyo together.

4. 1.B; 2.C; 3.A

5. A = 1kg and 930g; B = 1kg and 930g, C = 1kg and 930g, D = 1kg and 220g; E = 1kg and 930g. D is the odd one out.